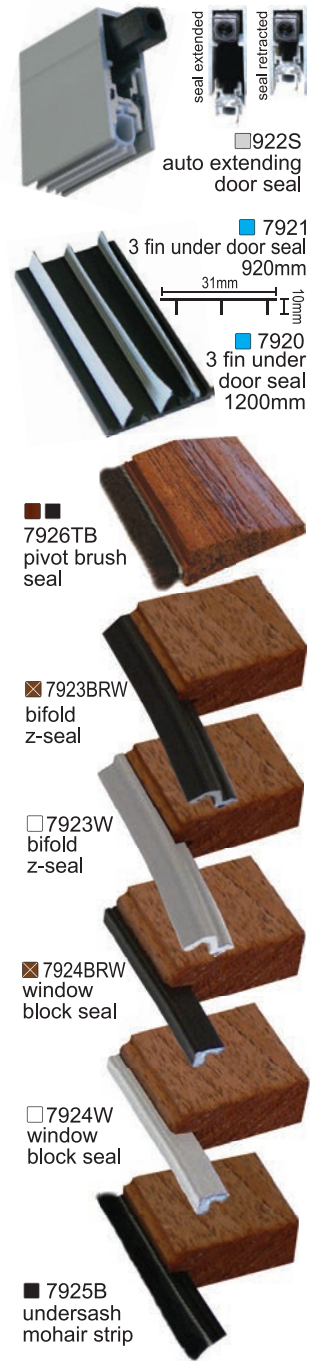


# woodworkers stealshield + timber accessories

## seals



seal extended  
seal retracted

■ 922S auto extending door seal

■ 7921 3 fin under door seal 920mm

■ 7920 3 fin under door seal 1200mm

■ 7926TB pivot brush seal

■ 7923BRW bifold z-seal

□ 7923W bifold z-seal

■ 7924BRW window block seal

□ 7924W window block seal

■ 7925B undersash mohair strip



## stealshield screens



top hinge detail

■ 377T timber grain d/hung top hinged stealshield

bottom pushlock detail

stock stealshield panels for stock double hung windows available in timber grain and white.

height x width

2074 x 598
2074 x 758
1761 x 598
1761 x 898
1461 x 448
1461 x 598
1461 x 898
1161 x 448
1161 x 598
1161 x 898
1161 x 1198
961 x 598
961 x 898

■ 378T **safebreeze** ventilation door panel with stealshield security mesh and openable, clear glazed, timber grain sash aperture sizes available

- 1048 x 224mm
- 1639 x 169mm

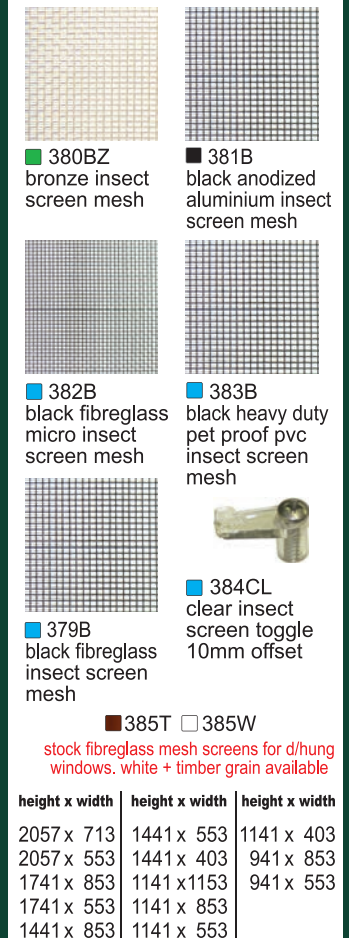
security isn't pricey... it's priceless

STEALSHIELD WINDOW PROTECTION

Stealshield panels provide affordable intruder, insect and bushfire protection and have the convenience of being easily openable for painting, cleaning and escape during emergencies. Stealshields are constructed of woven powdercoated stainless steel mesh with apertures less than 2mm to comply with bushfire regulations, encased in timber grain or white trim to blend unobtrusively with timber joinery.

□ 377W white double hung top hinged stealshield

## insect screens



■ 380BZ bronze insect screen mesh

■ 381B black anodized aluminium insect screen mesh

■ 382B black fibreglass micro insect screen mesh

■ 383B black heavy duty pet proof pvc insect screen mesh

■ 384CL clear insect screen toggle 10mm offset

■ 379B black fibreglass insect screen mesh

■ 385T □ 385W stock fibreglass mesh screens for d/hung windows, white + timber grain available

height x width	height x width	height x width
2057 x 713	1441 x 553	1141 x 403
2057 x 553	1441 x 403	941 x 853
1741 x 853	1141 x 1153	941 x 553
1741 x 553	1141 x 853	
1441 x 853	1141 x 553	

## timber finials & corbels



RF2 RF3

70 x 70 ROOF FINIALS

650 mm our turnery is made in durable hardwood  
780 mm  
950 mm customised designs available

Ball A 75 x 75  
Acorn B 100 x 100  
Crown 2 100 x 100  
Crown 3 100 x 100

Stock timber balls for external use are made in durable hardwood

cedar corbel

FP7 clear grade pine 63 x 34

T16 320 X 100 X 75

## post caps



■ C3

■ C4

decorative finial caps for metal or timber post

fit on over

- 90 x 90mm
- 100 x 100mm
- 120 x 120mm
- 125 x 125mm
- 150 x 150mm

■ C7

■ C8

they are sold in a mill finish (aluminium) ready to be painted Powder coated POA

refer to item code in current hardware pricelist for costings

woodworkers stealshield + timber accessories

# woodworkers finishes

woodworkers finishes



## 5 GOOD REASONS WHY YOU SHOULD USE SIKKENS OIL BASED COATINGS

- As a natural oil-based coating it nourishes the timber while at the same time allowing it to breathe.
- It is very easy to apply and can easily be removed from glass etc when accidents occur.
- It is equally easy to re-coat over time without the need for the complicated etching required with plastic acrylic coatings.
- It has excellent longevity
- It 'lubricates' movement of the joinery items that need to slide against each other (eg double hung windows) rather than acrylic coatings which tend to stick together.

### SIKKENS ON CEDAR

### SIKKENS ON PINE

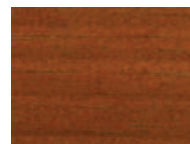
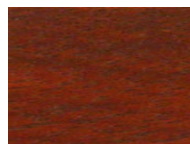
077 pine



006 light oak



009 dark oak



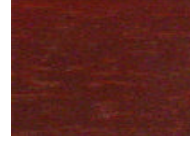
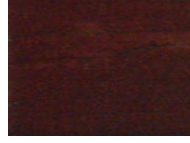
010 walnut\*



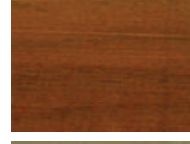
045 mahogany



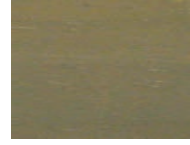
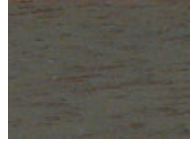
048 rosewood



085 teak



813 silver grey



020 ebony\*



## finishing products

### sikkens



362  
**CETOL HLS**  
Water repellent, penetrating, low build transparent wood stain used as a base coat under cetol Filter 7 Plus, TGL Gloss Plus and Deck Plus.  
1L, 5L + 20L cans



363  
**CETOL FILTER 7 PLUS**  
Flexible medium build transparent satin top coat with UV filters. Designed as two coat finishing over Cetol HLS.  
1L, 5L + 20L cans



364  
**CETOL DECK**  
Water repellent wear resistant durable high build transparent coating applied over Cetol HLS primer.  
1L, 5L + 20L cans



365  
**CETOL TSI SATIN PLUS**  
Transparent oil based finish for interior use only. Non toxic with good resistance to wear. Seal, top coat and stain in a single can.  
1L + 2.5L cans

how to finish your joinery video



\* Dark colours are not recommended for external use. Refer FAQ 3 for warranty conditions



366  
**CETOL TGL PLUS**  
High gloss oil based finish for exterior doors applied over Cetol HLS base coat. Durable, flexible and completely clear  
1L + 5L cans



368  
**WHITE UNDERCOAT FAST DRYING**  
Quick drying oil based undercoat that sands to a smooth base for enamel top coats  
1L, 2L, 4L + 10L cans



370  
**CEDAR SEAL**  
Water repellent, penetrating, low build transparent wood stain used as a base coat under cetol Filter 7 Plus, TGL Gloss Plus and Deck Plus.  
1L, 5L + 20L cans



369  
**TIMBER MATE WOOD FILLER**  
Interior grade non shrinking water soluble filler  
250g tubs



352  
**INOX**  
stainless steel lubricant spray  
100gm + 300gm

we recommend these products because we know they work!

